

For Business Students, Educators and Professionals

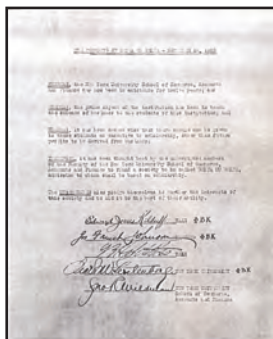
## A Look Back - The History of Delta Mu Delta

This is the first electronic edition of the Vision - a major landmark in our history. Since 1913, DMD has inducted over 130,000 outstanding business students, and this issue of the Vision provides a look back at the *key* moments in our past 93 years. Delta Mu Delta's scholarship fund is supported by the generosity of our membership, and the most recent recipients are featured in this edition - a tangible symbol of your legacy to DMD.

*Please join us in cyberspace: to look back at our history and forward to a new era of the Vision at [www.deltamudelta.org/vision](http://www.deltamudelta.org/vision).*

### In the beginning...

Delta Mu Delta was founded November 18, 1913 by five New York University professors. Educated at Yale, Harvard and New York University, where three of them were recognized by Phi Beta Kappa, they believed that exceptional business students should be given recognition similar to Phi Beta Kappa for the liberal arts.



First Charter Image

The first chapter was installed at New York University on January 16, 1914 - more on that later. On July 1, 1951, members of six active chapters met to discuss the establishment of a central organization to standardize procedures, control the issuance of certificates and keys, formulate bylaws, and assist the chapters. On August 12, 1952, a corporate charter was granted under the laws of Pennsylvania.

In 1963, Delta Mu Delta was admitted to membership in the Association of College Honor Societies (ACHS). From that point on, the Society has experienced steady and sound growth. Membership in ACHS assures all chapters and their members that Delta Mu Delta meets the highest standards set by all of the member societies in all fields of learning.

In October 1989, a dialogue between the Society and the new accrediting organization, the Association of Collegiate Business Schools and Programs (ACBSP) resulted in an affiliation of the two organizations for their mutual benefit. In January 1992, a letter of agreement was signed whereby Delta Mu Delta agreed to establish

new chapters only at ACBSP accredited schools. The agreement also provided that existing Delta Mu Delta chapters would continue as members of the Society whether or not they became accredited by ACBSP.

Since that 1992 agreement, 117 chapters have been chartered at ACBSP accredited colleges and universities. By 2004 the Society has granted a total of 260 chapter charters and inducted more than 130,000 members. The Society maintains lifetime contact with members all over the world.

In 1994, the two honor societies for accredited business schools, Delta Mu Delta and Beta Gamma Sigma, together established Sigma Beta Delta for regionally accredited schools. Later that same year, the three Societies formed the Federation of Business Honor Societies. In 1998, Delta Mu Delta provided the support and financial means to found Kappa Beta Delta, the honor society for two-year ACBSP accredited business programs.

*Click here for a list of DMD's Past Presidents.*

### Inside this issue:

President's Message	pg 2
Scholarship Recipients	pg 3-7
American Idol ASU Style	pg 6
Loss of an Old Friend	pg 8
Membership Benefits	pg 8
Current Contributors	pg 9

# Delta Mu Delta International Honor Society



## National Executive Council

President

**Dr. Janis Petronis**  
Tarleton State University

Vice President

**Prof. B. Timothy Allport**  
Mercy College

Vice President Extension Development

**Dr. Michael V. LaRocco**  
University of St. Francis

Treasurer

**Prof. Kathleen E. Bauer**  
Midwestern State University

Secretary

**Mr. R.L. Sosnowski**  
DePaul University

Immediate Past President

**Dr. William H. Brunsen**  
Eastern New Mexico University

## Regional Representatives

**Dr. Charles B. Finn** -R1, NE  
College of Saint Rose

**Dr. Charles (Chuck) Fazzi** -R2, E  
Saint Vincent College

**Prof. Cindi Bearden** -R3, SE  
LaGrange College

**Dr. Ashton I. Veramallay** -R4, NC  
Indiana University East

**Dr. John Lewington** -R5, MW  
Maryville University

**Dr. Kitty Campbell** -R6, SW  
Southeastern Oklahoma State  
University

**Dr. Sandie Kiehl**-R7 & 8, NW & Intl.  
Linfield College

Advisory Board

**Mr. Anthony Jablonsky**  
**Prof. Robert L. McCall**  
**Dr. Randall M. McLeod**  
**Dr. Terry L. Mendenhall**

Central Office Staff

**Rich Sosnowski**  
Executive Director  
**Renae McFadden**  
**Mickey Wendorf**  
**Caroline L. Portlock**  
Newsletter Editor

**Need to contact us?  
Here's how...**

### Central Office

9217 Broadway  
Brookfield, IL

E-mail: [DMD@dmd-ntl.org](mailto:DMD@dmd-ntl.org)

Phone: 866/789-7067

Fax: 708/887-5469

[www.dmd-ntl.org](http://www.dmd-ntl.org)

## Message from the President



**Janis Petronis**  
DMD National President  
Tarleton State University

Founded in 1913, Delta Mu Delta will soon be 100 years old. The DMD Board has already begun discussion of centennial celebration plans. Also, within the last year we have lost two dear friends and legends in the history of Delta Mu Delta, Walter Rohrs reported last fall, and recently Genevieve Duffin reported in this issue. Although the history of the Society has been updated occasionally from our Central Office records and for the Triennial program, we are using this issue of the *Vision* to present a thumbnail sketch of that history to all our new members and alumni.

If you happen to know about other parts of the DMD history that we have missed here, we would appreciate your contacting the DMD Central Office with that information. By the time we celebrate the 2013 DMD Centennial, we want to have a complete and accurate history written and ready to pass on to the next century of DMD members.

The DMD history certainly reflects change, and the Society has experienced several changes since the last *Vision*. First, the Central Office has moved from one Chicago location to another, and I am proud to say, with a minimum of downtime at the beginning of our busy induction season. DMD Executive Director Rich Sosnowski and the DMD staff, Renae McFadden and Mickey Wendorf, have all earned stars in their crowns for the hard, and extra, work it took to pull off the move in record time and with so few hitches. The DMD Board appreciates your dedication all the time, but especially during the month of March!

Another change that directly impacts all of you is our first electronic edition of the *Vision*. As we update our online services for you, we felt the e-*Vision* would be a step in efficiency and modernization of our communications with you. The Fall edition will continue to be delivered in hard-copy form. Please let us know what you think of the e-*Vision*. We welcome your suggestions and feedback - please e-mail us at [vision@deltamudelta.org](mailto:vision@deltamudelta.org).

A change I am personally very pleased to announce is the DMD Board's commitment to recognize and reward those who are the real face of Delta Mu Delta, our Faculty Advisers. The Fall edition of the *Vision* will spotlight our very first Faculty Adviser of the Year Award, to be announced at the ACBSP Conference in June along with the Jablonsky Award and the DMD Scholarship winners, as well as our new Faculty Service Awards. In the Fall edition, we will begin featuring one or two Faculty Advisers in each *Vision*. Be watching. The DMD spotlight may fall on your favorite when its least expected.

Enjoy the first edition of the e-*Vision* as we continue to make DMD history!

## Regional Representatives

### REGION 1 - NORTHEASTERN



**Dr. Charles B. Finn**  
College of Saint Rose

*Connecticut, Maine,  
Massachusetts, New Hampshire, New  
Jersey, New York, Puerto Rico,  
Rhode Island, Vermont and Virgin  
Islands*

[finn@strose.edu](mailto:finn@strose.edu)

### REGION 2 - EASTERN



**Dr. Charles (Chuck) Fazzi**  
Saint Vincent College

*Delaware, District of Columbia,  
Maryland, Pennsylvania, Virginia,  
and West Virginia*

[charles.fazzi@email.stvincent.edu](mailto:charles.fazzi@email.stvincent.edu)

### REGION 3 - SOUTHEASTERN



**Prof. Cindi Bearden**  
LaGrange College

*Alabama, Florida, Georgia,  
Kentucky, Mississippi, North  
Carolina, South Carolina, and  
Tennessee*

[cbearden@lagrange.edu](mailto:cbearden@lagrange.edu)

### REGION 4 - NORTH CENTRAL



**Dr. Ashton I. Veramallay**  
Indiana University East

*Illinois, Indiana, Minnesota,  
Michigan, Ohio, Wisconsin*

[averamal@indiana.edu](mailto:averamal@indiana.edu)

### REGION 5 - MIDWESTERN



**Dr. John Lewington**  
Maryville University

*Iowa, Kansas, Missouri,  
Nebraska, North Dakota, South  
Dakota*

[jal@maryville.edu](mailto:jal@maryville.edu)

### REGION 6 - SOUTHWESTERN



**Dr. Kitty Campbell**  
Southeastern Oklahoma State University

*Arkansas, Louisiana, New Mexico,  
Oklahoma, Texas*

[kcampbell@sosu.edu](mailto:kcampbell@sosu.edu)

### REGION 7 - WESTERN



**Dr. Sandie Kiehl**  
Linfield College

*Alaska, Arizona, California, Colorado,  
Hawaii, Idaho, Montana, Nevada,  
Oregon, Utah, Washington, Wyoming*

[skiehl@linfield.edu](mailto:skiehl@linfield.edu)

## The Scholarship Program Its Growth and Evolution

If you've been a regular reader of this newsletter, you've read our explanation of how your donations are held in trust by the Society with only the earnings used to fund scholarships to business students where we have chapters. We would like to present the history of the Scholarship Fund Program and how it effectively places those funds with worthy students.

Even in the 60's it was recognized by the leadership of our Society that a high quality, nationally recognized, honor society must seek way to accomplish the second part of its mission - to encourage continuing education. The most evolutionary change was to start a scholarship fund.

The Scholarship Fund began in 1966 with \$100 set aside from the general funds. Funding for the early years came from two sources: amounts set aside from the general operating funds of the National Chapter, and local chapters making donations directly to the fund. Early chapter contributors were Alpha Beta Chapter, Wagner College, Alpha Xi Chapter, New York University, and Eta Chapter, DePaul University. Dean Harold Shanafield, Northwestern University, headed the scholarship committee in 1967. At that time the scholarship fund had \$300 plus a few dollars in interest.

Soon after, the fund began to award scholarships to deserving students. The first one was \$100 awarded in 1970, two more in 1971, and four in 1973. The number of awards grew to 11 in 1977, when the highest three awards were increased to \$200.

The first named scholarship was started with a contribution of \$1,000 in memory of Albert Escher from Northwestern University's Commerce Club. Later awards were instituted in honor of Mildred R. Marion, A. J. Foranoco, Helen Snow (from her estate), Balwant Singh, Abderrahman Robana, and new this year, in honor of Gemma Welsch from DePaul University. You can see the reoccurrence of some names over and over throughout the years.

The Scholarship Program Awards have been restructured to raise the lowest award to \$1,000 and to add as many as 21 Honorable Mentions at \$100 each. The 26 scholarship awards have a total value of \$28,000 - from the top award, the Mildred R. Marion, of \$2,000, and the Escher and Foranoco scholarship awards at \$1,500, to all remaining awards at \$1,000 each.

Since the Scholarship Fund inception with the first \$100 award, including those to be announced on July 1st this year, over \$610,000 has been awarded to nearly 850 scholars. We receive many letters and notes from thankful winners - some explaining how they would not have been able to continue without our assistance - all made possible by donations from you to our Forever Dollars Program.

*See the Forever Dollars Contributors on page 9.*

*From "The Story of Delta Mu Delta," published in 1915, probably as a informational piece by New York University's Alpha Chapter.*

### A Plea to Freshmen

The time to start to work for election to this society is in the Freshman year. Many undergraduates lament the fact that they started too late in their student career to do good, hard studying. You should start now to achieve excellence in your work. You will never regret it.

Moreover remember that steady, daily work is better than brilliant spurts. You need not be reminded of the story of "The Hare and the Tortoise."

And even if the Key is not your goal, hard work in the School means financial rewards in business. But start now to get as much as you can out of your courses.

*Although said nearly two centuries ago, some concepts do not age.*

***"What we do for ourselves dies with us. What we do for others and the world remains and is immortal."***

*- Albert Pines*

### Why Me?

And they asked, "Go, give, volunteer."

And I said, "Who? . . . Me?" And they said, "Yes! . . . You.!"

And I said, "But I'm not ready yet. I've got company coming. I can't leave the kids. And you know there's no one to take my place."

They smiled and said, "Are you sure?"

And asked again, "Go, give, volunteer."

And I said, "But I don't want to. Listen: I'm not the kind to get involved in missions. Besides, my family won't like it: and my neighbors - what will they think?"

And again they said, "You will be thought well of. Go, give, volunteer."

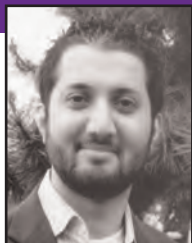
And I said, "Look, I'm scared! The others are going to hate me! And cut me to pieces. And I can't take it all by myself."

They smiled, "Where do you think we'll be? Go, give, volunteer."

And I said, "Where do I begin?"

*(An anonymous long-time volunteer)*

### 2005 Delta Mu Delta Scholarship Recipients



**Houssam Manoon Ahmed**  
University of Central  
Oklahoma, OK



**Jennifer Aldrich**  
LaGrange College, GA



**Linda Lee Baynes**  
West Liberty  
State College, WV



**Lisa Capone**  
Eastern Connecticut  
State University, CT



**Charity Allison Day**  
Athens State  
University, AL



**Christine Dias**  
The College of  
St. Catherine, MN



**Monica Fine**  
Northwest Missouri  
State University, MO

## The DMD Key



The Delta Mu Delta key is the symbol of our Society most often seen by the world. The key is now given to us as we are inducted. We wear it proudly as evidence of our membership. Its picture identifies your certificate and many publications as official society communication. The key has been our symbol from the time of the founding of the society. It has undergone many changes as the Society has changed.

Delta Mu Delta was formed to promote higher scholarship in the study of business and recognize and reward scholastic achievement in those studies. Like Phi Beta Kappa, the honor society to which three of the five founding members belonged, Delta Mu Delta would have a key, a symbol by which members could identify each other and be recognized for their achievement. From the first induction in February of 1914, the founding chapter at New York University presented these keys to new members.

Although the key does not appear to be required in the early days of the Society, we find in the financial statements of Northwestern's Epsilon Chapter the expenditure for a quantity of keys to match the number of members inducted.

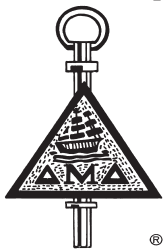
These early keys appear to have been meant to hang from a watch chain or something heavier. The key was two sided. Central to the design of the front side was the Greek letters with the year of induction above and the university name below. We have a sample from 1927 (*see above photo*) - on the obverse side the key bore the symbol of a mercantile ship under full sail, representative of commerce in all its dimensions. Curiously, on this older version, there is no English wording "Delta Mu Delta."

As the society began organizing itself around a strong national chapter in the 1950's, the key became more standardized. Probably at the suggestion of Balfour, the company making most of the keys at that time, a single die was made for the keys, with the suggestion that the name of the university could be engraved on the reverse rather than stamped on the front. This became our Society standard.

In ensuing years, the design has been modified so that today the ship and the Greek letters appear on the same side to allow the key to be worn pinned on a lapel. The ship and the waves of the sea have been simplified as has the background.



DMD Key from  
1927 Induction

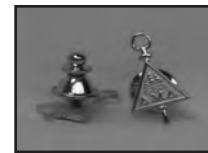


Key as  
standardized  
circa 1950.

The design is not only attractive as jewelry, but reproduces well wherever the symbol can be used to identify the society.

Over the years, the 10K gold key became more expensive and was optionally purchased by new members at the time of their order - but as the cost exceeded that of membership, fewer students owned our evidence of membership. Limited supplies of these more expensive keys are still available on the e-Store, but a choice of what is available is given free to any donor of \$250 or more to our Forever Dollars Scholarship Fund.

In the 90's our senior management decided to create a smaller, less expensive, gold kase key, and then to provide it free with every membership to continue to propagate the display of this symbol wherever we have members. Although the free version is in the form of a tack back, both the charm and pin versions are available on the e-Store.



Current day  
DMD Key

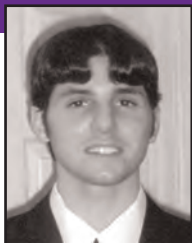
## Change Comes to DMD Board

Life is full of change. And so, too, it is with the Delta Mu Delta Board. Changes in the lives of some of the board members have made it regrettably necessary for them to resign. The new members will fill the positions to which they have been appointed until the next Triennial meeting and election in 2007.

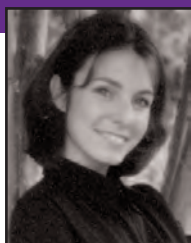
**Dr. Michael V. LaRocco** has accepted the position of Vice President, Extension and Development. As such, he oversees the activities of the regional representatives and bears much of the responsibility for the growth of our society. Dr. LaRocco's assumption of this position left the position of treasurer to be filled. **Professor Kathleen E. Bauer** leaves her position as Region 6 Representative to assume the treasurer's post. This, of course, led to a need for a new representative for that region. **Dr. Kitty Campbell** joins the board as the Southwestern Region (6) Representative. Two other regions have new representatives as well. **Dr. Charles B. Finn** will serve the Northeastern region (1) and **Dr. Charles (Chuck) Fazzi** the Eastern (2).

Pictures of the regional representatives are on page 2 of this edition of the *Vision* and bios and pictures are available online by using the "About Us" then the "Leadership Team" buttons and clicking on *View Profiles*.

## 2005 Delta Mu Delta Scholarship Recipients



**Ramin Ghadimi**  
Athens State  
University, AL



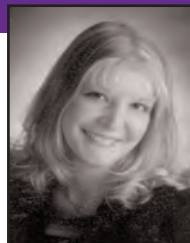
**Emily Grasmick**  
Southern Nazarene  
University, OK



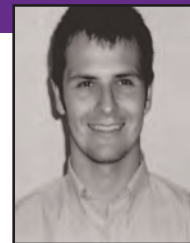
**Amy Lynn Harvey**  
Northwood University, MI



**Katherine Anne  
Hinkley**  
Anderson University, IN



**Mandi Hoefler**  
Nebraska Wesleyan  
University, NE



**Tomasz Jemczura**  
Roanoke College, VA



**Jillian Johnston**  
East Central  
University, OK

## Induction Ceremonies - Then and Now

by: Mickey Wendorf, DePaul University

I'm sure that you have been treated to a number of "when I was your age" stories. I'm at an age where I've started telling some of them myself. Many of the people I deal with don't know a world without personal computers, much less calculators, so the temptation is great. Nevertheless, this may be less a "when I was your age" and more a "where have we been and where are we going" story. In the more than 90 years we have been recognizing students for their achievement, some sort of celebration has frequently accompanied the induction of new members into Delta Mu Delta.

The very first induction ceremony was held at New York University. The induction of thirty-two undergraduate members was held in the faculty room on the eighth floor. (Apparently the room and its location was sufficiently well known that even when described eighteen years later there was no need to define it further.) Note that two of the thirty-two inductees were women.

After the induction, the members adjourned to the Hotel Brevoort for a nine course meal! The menu presents all the food in French. The descriptions along with the literary quotes provide clues to translation for those of us whose French is covered with nearly forty years accretion of undisturbed dust. (I know - you're saying how could she call "Mary had a little lamb" literature. Let's just use the Tennyson, the Keats and the Milton as our examples instead.) With such food and libation, we can only assume this was an elegant affair.

After the meal, talks were given by all five of the founding professors. The new honorary member, the Chancellor of the University, gave a talk on the work of the university. These inspirational words would seem to have liberal doses of business principles thrown in. The title of one of the talks appears to be a balance sheet!

*Click here for the program from that first induction including the entire menu in French, the names of the inductees and charter members, and descriptions of the talks.*

In the archives, dated fourteen years later, we find the invitation letter for the 1926 induction ceremony and banquet for New York University's Alpha chapter. By this time, the entire affair took place at the Hotel McAlpin. Only members and candidates were to attend. Dress for the event was semi-formal. The writer notes parenthetically "Tuxedos for men" just in case there was any question. The initiation fee was \$15, which seems to have covered the banquet, the key and the certificate. Similar to Northwestern's Epsilon Chapter in Chicago, gold keys were purchased at \$6 and engraved certificates for \$1.15, so we can assume that the dinner was quite some feast as well

I'm sure that there have been inductions along the way that have been very interesting for one reason or another. And we do still have inductions with very nice banquets and inspiring speakers. I attended one of those just a few months ago at DePaul University. But as Bob Dylan said "The times, they are a-changin'." The banquet or reception doesn't always fit the lifestyle of students getting an education today.

With campuses spreading across the nation and even the world, it becomes totally impractical to bring a group of deserving students together in one physical location - so chapters are turning to online inductions! There are many styles: some as simple as chat rooms, others using specialized software where the presenters have microphones so that all can hear the format over their computers. Some even use Interactive-TV centers with full two-way interaction. Whatever the format, all consist of identifying their candidates and taking the pledge.

That's today, ninety years later. In another decade? Who can predict?

### Induction Ceremony

*I (name) solemnly affirm to all those present  
and to those who have preceded me,  
That I will serve the Society  
to the best of my ability.  
I will observe the Society's  
constitution and bylaws  
and provide counsel and aid  
for my fellow members.  
In accepting membership to  
(Greek name) chapter of Delta Mu Delta,  
I acknowledge the distinct honor  
that has been bestowed upon me.  
This pledge is evidence of  
my commitment to your fellowship.*

The most important phrase of our oath is to "provide counsel and aid for my fellow members." Hundreds of you are doing that every year with contributions to the Scholarship Fund - more on that elsewhere. Still thousands more are participating in our MBNA credit card program where a tiny percentage of each purchase adds up to thousands of dollars helping to offset expenses of the Society - at no cost to the member! As we strive to maintain contact with you across the years, we hope that you will continue to think about "those who will follow."

*Rich Sosnowski*  
Executive Director

### 2005 Delta Mu Delta Scholarship Recipients



**Erik S. Kellerman**  
The College of  
St. Rose, NY



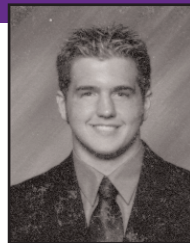
**Greisa Lalazi**  
University of Central  
Oklahoma, OK



**Teresa L. Lamb**  
Mount Saint Mary's  
University, MD



**Stephanie Leahy**  
North Park  
University, IL



**Allen Lode**  
Northwestern Missouri  
State University, MO



**Maleiha Masee**  
The College of  
St. Catherine, MN



**Raechelle Munna**  
Spring Hill College, AL

## American Idol - ASU Style

submitted by: Dr. Brenda Harper, Faculty Adviser

Athens State University's Alpha Iota Chapter is proud to be a team player of Delta Mu Delta. We are continuously striving for excellence in our work, recognizing our students and benefiting the community. Through (our) technology, we are able to reach every student now and openly communicate inclusive events.

The past year has been a very exciting time for our Chapter. We held our first annual Athens State University American Idol contest and the response and participation was overwhelming. The talent displayed far exceeded anything we watch on TV!

The students portrayal of judges Randy, Paula and Simon from American Idol was so convincing, we were not sure if they were acting or the 'real thing.'



ASU Idol judges also known as:  
Randy, Paula and Simon!

Participants were students, faculty, staff and even the President's Cabinet members. The prizes were numerous.

The most momentous part of the occasion was the grand finale where all the participants joined together singing.



ASU Idol contestants singing during the finale!

By demand, we are working on the next ASU Idol contest and dreaming of new ways to raise money.

The Alpha Iota Chapter is very busy planning our Spring Induction Ceremony. We are making this a grand occasion with a formal banquet in our ballroom! We will focus primarily on the new inductees, the officers and additionally recognize several individuals that have volunteered endlessly to the Chapter.

We are diligently bringing forth awareness of *Through Knowledge, Power: the power to manage for social and economic good*. Our personal motto is "A ray of hope, a responsibility to serve and a passion to care!"

## Eta Alpha Chapter Gathers Current & Former Honorary Members

submitted by: Dr. Joan Parris, Faculty Adviser



At the University of North Alabama in Florence, Alabama, current and former Honorary Members of the Delta Mu Delta Honor Society in Business Administration gathered for a group picture after welcoming new student members into the prestigious honor society at their April 12, 2006 induction ceremony on campus.

Pictured from left to right: Dr. William G. Cale, Jr. (newly inducted Honorary Member, UNA President), Mr. Earl Evans (Director of Internships, UNA College of Business), Mrs. Lisa Patterson (newly inducted Honorary Member, CPA, distinguished UNA Alumna), Ms. Tammy Irons (Attorney, distinguished UNA Alumna), Mr. Lawrence Conwill (retired Dean, UNA College of Business), Dr. Margie Crocker (retired UNA Business Education Department Chair), Dr. Kerry Gatlin (Dean, UNA College of Business), Dr. Bill Stewart (retired Dean, UNA College of Business), Dr. Joe Thomas (retired, UNA Vice President of Academic Affairs), Mr. Steve Holt (Chairman of the Shoals Chamber of Commerce and Member of the UNA College of Business Advisory Council), and Mr. Bobby Irons (Mayor of Florence, Alabama).

### 2005 Delta Mu Delta Scholarship Recipients



**Nhan Le Dai Nguyen**  
Midwestern State  
University, TX



**Janet L. Oakes**  
The College of  
St. Catherine, MN



**Lane Graves Perry III**  
University of Central  
Oklahoma, OK



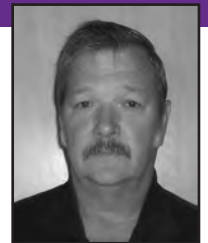
**Katie Reynolds**  
Chadron State  
College, NE



**Andrew Rosenberg**  
Anderson University, IN



**Abby Sueper**  
Nebraska Wesleyan  
University, NE



**Rickey A. Tribble**  
Athens State  
University, AL

## Kappa Sigma Chapter Ceremonies at Neumann College

submitted by: Janet Massey, Faculty Adviser

The installation ceremony of Kappa Sigma Chapter of DMD at Neumann College took place on April 10, 2006 in the President's Office on the Main Campus in Aston, Pa. Regional Representative, Dr. Chuck Fazzi, conducted the ceremony during which Janet Massey, Kappa Sigma's



Pictured from left to right: Ali Nikman, Faculty; Dr. Rosalie Miranda, President of Neumann College; Arde Shahmaei, Dean of the Division of Business and Information Management at Neumann College; Dr. Chuck Fazzi, DMD Regional Rep.; Marguerite O'Beirne, Vice President for Mission and Ministry and Interim Vice President for Academic Affairs; Janet Massey, Kappa Sigma Faculty Adviser; Richard Mahee, Faculty; Robert Till, Faculty; Danielle Pino, student member; and John Wong, Faculty.

faculty adviser, was admitted as an honorary member.

The induction ceremony was held on April 19, 2006 during the thirteenth annual Business Exchange dinner at Springhaven Country Club in Wallingford, Pa. The keynote speaker was Mr. Michael Pearson, president of Union Packaging LLC located in Yeadon, Pa. Nine students and six honorary members were admitted to membership at that time.



Pictured from left to right front Danielle Pino, student member; Ann Iannello, student member; Josephine Cecala, honorary member; Kathleen Friel, honorary member, Kathrina Teo, honorary member, Jennifer April, honorary member, Kelly Robinson, honorary member, Dr. Rosalie Miranda, President of Neumann College. From left to right, back row; Glynnis McCulley, student member; Michael Kaczinski, honorary member; Carol Fortunato, student member; Ira Hobson, student member; Kris Masciantonio, student member; Janet Massey, Faculty Advisor for Kappa Sigma; Alicia Cavalli, student member; Joseph Gaglioti, student member and Arde Shahmaei, Dean of the Division of Business and Information Management at Neumann College.

## Delta Beta Chapter at Texas A&M Inducts New Members on Two Campuses

submitted by: Dr. Josephine Sosa-Fey, Faculty Adviser



San Antonio Induction- left to right: Dr. Josephine Sosa-Fey, Faculty Adviser, Rebeka Gutierrez, Delta Beta Chapter President, Dr. Carolyn Green, Interim Executive Director and Dean of Academic & Student Affairs and Dr. Robert Diersing, Dean of the College of Business

After a hiatus of several years, the Delta Beta Chapter of Delta Mu Delta at Texas A&M, Kingsville Campus, is again alive and well!

At the Kingsville campus, under the guidance of faculty adviser Dr. George Gresham, twenty students were inducted on April 24th. A separate ceremony at the San Antonio System Center inducted an additional fifteen students on April 26th.

Dr. Josephine Sosa-Fey, the faculty adviser for the San Antonio Center, reports that students are approaching her to ask if they are eligible for membership in Delta Mu Delta. She states "So, the word definitely got around, and I believe that it will have the effect of sparking interest in higher academic achievement."

Dr. Sosa-Fey and the Dean of the College of Business, Dr. Robert Diersing, are collaborating in the process of establishing a separate co-chapter at the San Antonio System Center. (See the related story on page 8.)



San Antonio Inductees above - Kingsville Campus Inductees below.



## 2005 Delta Mu Delta Scholarship Recipients



**Amber Tyler**  
The College of St. Catherine, MN



**Nathan Uthe**  
Northwestern Missouri State University, MO



**Presiyan Vasilez**  
University of Central Oklahoma, OK



**Si Si Zhang**  
Linfield College, OR

## Not pictured:

**Lauren Marina Alfonzo**  
Southern Nazarene University

**Jason Pachona**  
Elmhurst College, IL

**Sunny Desa**  
New York Institute of Technology

**Eng Tran**  
The College of St. Catherine, MN

**Rebecca Fossett**  
Athens State University, OK

**Slav I. Todorov**  
University of Central Oklahoma, OK

**Lisa Marie Norris**  
Spring Hill College, AL

**Lana B. Yount**  
Southwestern Oklahoma State University, OK

## The Loss of a Dear Friend



*Delta Mu Delta Honor Society has lost a pillar of its history with the passing of Genevieve Duffin last Fall. To examine her service is to view a piece of DMD history as well.*

Genevieve Duffin's service began in February 1965, a month before her formal induction into Beta Chapter of Delta Mu Delta at Northwestern University on March 7, 1965. Over the next thirty years, Genevieve worked tirelessly to help build DMD into the strong, highly respected society it is today.

In 1973, as Chair of the Standards and Definitions Committee, she obtained reclassification for DMD from a social to an exempt charitable and educational organization under IRS Section 501(c)(3). She then gained expanded tax-exempt status for all DMD chapters. During this period she also registered the collective insignia of DMD with the US Patent Office, and secured copyright protection for our current Booklet of Information and newsletter.

Genevieve's dedication to academic excellence was an inspiration to our members. She graduated summa cum laude from Northwestern University in Business Administration in 1964. Over the years she received many awards and prizes for high scholarship: the Phi Gamma Nu Gold Key, Phi Chi Theta Gold Key, Joseph Schaffner Degree Prize, and in 1986 was awarded life membership of the Illinois CPA Society.

Genevieve's life was enriched by many years of service to the Marklund Children's Home (Bloomington, IL), stamp collecting, photography, and above all her avid interest in baseball and in particular her support of the Chicago White Sox. Hard work and moving forward with new ideas were the constant themes of her life's work for DMD and many other organizations.

Genevieve, a lifelong White Sox fan, died on September 22, 2005 - just over a month before her beloved team won the World Series.

*Click here for more on Genevieve and about her baseball expertise.*

## DMD Arrives on Broadway

... Avenue, that is.



After three years in 2 Salt Creek Lane's lower level with space for the executive director and an assistant, we've moved 3 miles east, one floor up and into enough space for our four-person operation. We're looking forward to serving you even better from this new location. Our toll free number remains the same. For our new address, fax and phone numbers, please use the "Contact Us" button from any page on our site. While you're there, bookmark our home page and you'll always be in touch!

## MEMBER BENEFITS

### Answer Financial's Answer Center

As a member of Delta Mu Delta, you have access to a complimentary insurance shopping service through Answer Financial's Insurance Answer Center.

Pick up the phone and call. You can speak with an unbiased, licensed insurance professional who can help you evaluate your current coverage and determine if you need extra protection through increased limits of endorsements. The agent can then ship a number of competing, top-name insurance companies to find the best price for the coverage you need.

There's no cost to use the service, and there's no obligation to buy. There's no risk in calling or checking out the information and quotes on the web site. So reduce your risk of loss.

Call 1-877-777-9992 or check the Answer Center's web site through a link from our web site - choose members, then benefits. Be sure to mention your group name, DMD.

### Another way to support Society activities - get a DMD card!



Click card for application.

## Co-Chapters Adopted to Meet Challenges of Education Today

Delta Mu Delta installed its first co-chapter at Troy University at Troy, Alabama.

On February 23, three honorary memberships were awarded, and an additional 48 students became the first members of the Zeta Omicron Chapter of Troy at Troy.

This installation highlights yet another change as our Society positions itself to serve the current and future needs of our members. As each school finds itself involved on multiple campuses, as schools strive to serve diverse populations, and as the combinations of brick and mortar vs online education increase, students find it more difficult to participate in our honor society. It becomes more and more challenging for a single set of faculty advisers and a single set of chapter officers to serve these diverse needs. Some students find themselves inadvertently not included in the invitation and induction.

In response to these challenges, DMD's Board approved co-chapters and established guidelines for their establishment at the January 2006 National Board Meeting. The co-chapter approach allows installation of peer chapters that function and are serviced independently to benefit distinctly different groups of students within the same institution, with the same accreditation as the original chapter.

The Troy Sorrel College of Business became accredited by the Association of Collegiate Business Schools and Programs (ACBSP) in 2005. Soon after, Dean Earl Ingram petitioned and received approval for establishing Troy's co-chapter.

We hope this is the first of many, as conscientious advisers struggle with needs created by the expanding scope of higher education today.

**Special Thanks**

There are many ways to support the Forever Scholarship Fund. We would like to thank the following people who have donated to the Fund for that special reason:

**Timothy & Susan Allport**

- In Memory of Walter Rohrs

**Jim Granfor**

- On behalf of Dorothy J. Granfor

**Richard & Janis Petronis**

- In Memory of Michael Sosnowski  
on behalf of DMD National Executive Council

**Kathleen Allison Ramirez**

- In Memory of Walter Rohrs

**Matching Grant Program**

If you are considering a donation, please check with your company - through Matching Grants your donation will assist more students! Recent Grants were received from:

- *Verizon* on behalf of Linda Mills  
- *The Pepsi Bottling Group* on behalf of Paul Contois

**\$100 and over**

Athens State University  
**William Frederick Pepper**  
Dallas Baptist University  
**Neil C. Hellis**  
DePaul University  
**James Alan Fredrick**  
DePaul University  
**Walter A. Gregory, Jr.**  
Madonna University  
**James S. Bonadeo**  
Nichols College  
**Julie E. Pike**  
St. Edward's University  
**Ellen Paul**  
University of St. Francis  
**Bob Wysocki**  
Tiffin University  
**Mark A. Rebholz**  
Walsh College  
**John E. Mullins**

**Other generous donors**

Adelphi University  
**Joseph S. Castro**  
**Stewart Colman Rego**  
Alabama A&M University  
**Samuel Chima Mgbengasa**  
Andrews University  
**Sallie J. Alger**  
Ashland University  
**Joel Dale Beckler**  
**Kevin Dougherty**  
**Rebecca Leah Ewing**  
**Linda Hartshorn**  
**Bourbon Jung**  
**Mark W. Whitfield**  
Athens State University  
**Donna Maley**  
Birmingham-Southern College  
**Jerry Hugh Cotney, Jr.**  
Bowie State University  
**Warren Scurry**  
University of Bridgeport  
**Dr. Neil A. Salonen**

California State University at Dominguez Hills  
**Julie Kay Block**  
**Carol A. Fish**  
**Mark A. Thuer**  
University of Central Oklahoma  
**Karen Lynn Petrie**  
University of Cincinnati  
**John Barnhorst**  
**Nellie Broadus**  
**William Brown**  
**Jane Collins**  
**Steven Kurtz**  
**Marilyn Moeller**  
**Sharon Morris**  
**Stanley Quay**  
**Bruce Ring**  
**Donald Wesley**  
Cumberland University  
**Carri A. Trocha**  
Dallas Baptist University  
**Linda Ann Barriga**  
Delta State University  
**Margarita S. Carter-Niewald**  
DePaul University  
**Lucilla Jane Berman**  
**Diane Chomiak**  
**Yvon E. Fahrenwald**  
**Oscar Griffin, Jr.**  
**Kenneth R. Harder**  
**Bryan J. Kinderman**  
**Michelle Mazda**  
**Bret L. Popper**  
**Elizabeth Pritchard**  
University of the District of Columbia  
**Dale Eugene Lee**  
Dowling College  
**Joseph W. Petrauskas, Sr.**  
**John Joseph Walsh**  
**Mary Wayne**  
Eastern Connecticut State University  
**Edward J. Kelley**  
Eastern New Mexico University  
**Dr. Dale Davis**  
**Victoria Meyer-Christian**  
**Ginger A. Yingling**  
Eastern University  
**Constance F. Esmonde**  
**Barbara Jean Kappler**  
**Anthony J. Pastula, Jr.**  
**Robert P. Vanderkamp**  
Elmhurst College  
**Kelley Marie Krowczyk**  
**Diane B. Shevchuk**  
Fairleigh Dickinson University  
**James Wayne Bova**  
**Marguerite Susan Bremner**  
**Robert E. Tevis**  
**Elizabeth Anne Voight**  
Fontbonne University  
**Rebecca G. Anthony**  
**John P. S. Barrett**  
**Bernice F. Heavilin**  
**Joyce Kettenhofen**  
**Brian David Liddell**  
**Sister Carmen Schnyder, CPF**  
Gannon University  
**Patrick John Agnello**  
**Gene Friedman**  
Georgian Court University  
**Mary C. Curry**  
**Susan Milano**  
**Janice L. Tonks**  
Illinois College  
**J. Arlin Boles, I**  
University of the Incarnate Word  
**Pamela Dale Aramburu**  
Indiana University East  
**Gale Richardson**

University of Indianapolis  
**Mark Jason Ransom**  
Jackson State University  
**Regina Lanese Peaches**  
Keene State College  
**William Francis Lynch**  
Le Moyne College  
**Helen K. Wilkins**  
Madonna University  
**Antoinette S. Knechtges**  
**Denise A. Kulas**  
**Linda M. Shaheen**  
**Janice M. Smallwood**  
Manhattan College  
**Cristina Marinucci**  
Marymount University  
**Helen Clark**  
**Michael J. Parkinson**  
Maryville University  
**Dr. John A. Lewington**  
University of Massachusetts  
**Nancy J. Goulat**  
Mercy College  
**Priscilla Bonilla**  
**Joy Colelli**  
**Daniel A. Ferguson**  
**Victoria Garbarino**  
**Patricia D. Graves**  
**Philip R. Otieno**  
Midwestern State University  
**Catherine M. Crockett**  
Mississippi College  
**David Ream Dawkins**  
Mount Saint Mary College  
**Liliana Green**  
**Marilyn Karlich**  
The Mount St. Mary's University  
**M. Dunbar Ashbury, Jr.**  
**Harry C. Benjamin, Jr.**  
Mt. Vernon Nazarene University  
**Lloyd Dale Seibert, Jr.**  
New Jersey City University  
**Antoinette Maria Marmora**  
**Paul Ernest Natalizio, IV**  
**David J. Tonzola**  
New York Institute of Technology  
**Shahar Cohen**  
**Joyce C. A. Ehrhardt**  
**Raymond Stefanowicz**  
Nichols College  
**Michael Allard**  
**Patricia R. Doyle**  
**Ronald W. Lantz**  
**Susan C. Ouellet**  
Northwood University  
**Joanne Marie Mattausch**  
**Elizabeth Vicary**  
College of Notre Dame of Maryland  
**Mary S. Berkebile**  
**Vanessa S. Carter**  
**Suzanne Marie Honeycutt**  
**Janise A. Kilar**  
**Cynthia Ann Taylor**  
**Peggy A. Weber**  
Ohio Northern University  
**Joseph Donald Selogy**  
Our Lady of the Lake University  
**Elizabeth Castle**  
**Peggy D. Kelso**  
**Timothy J. Merlock**  
**Pam Potter**  
**Hajar Sanders**  
**Matthew P. Streger**  
**Richard Paul Zimpfer, II**  
Pepperdine University  
**Calvin C. Waller**  
Prairie View A&M University  
**Awilda Paulette**

Quinnipac College  
**Jorge R. Adrian**  
Ramapo College of New Jersey  
**Ruth Ann Polifrone**  
Sacred Heart University  
**Mary D. Campbell**  
**Patricia A. Clark**  
**Michael G. Kuruc**  
St. Ambrose University  
**Michael A. Beuthin**  
College of St. Catherine  
**Mary D. Martin-Khan**  
St. Edward's University  
**Thomas N. Gerthoffer**  
University of St. Francis  
**Donna A. Zelinski**  
St. John's University  
**Marvin R. Glickman**  
St. Joseph's College  
**Kim Elizabeth Mateiko**  
The College of Saint Rose  
**Joseph Marshall**  
Salem State College  
**Diane F. Myers-Thevenau**  
Southern Connecticut State University  
**Patricia A. Bennett**  
**Gregory Ceballos**  
Southern New Hampshire College  
**David Lee Blessing**  
**Jennifer L. Desrosiers**  
**Richard P. Neville**  
**Antonio R. Seales**  
**Sandra Swallow**  
**Nancy J. Wilson**  
Southern Polytechnic State University  
**Mert Karasu**  
The Richard Stockton  
College of New Jersey  
**Raymond T. Burke, Jr.**  
**Carmen Campise, Jr.**  
**Michael Cava**  
**Marjorie Nicole Gabrielle**  
**Guy Frederick Renzi**  
**Michele Sheft**  
SUNY Fredonia  
**Tracy E. Kwiatkowski**  
Tarleton State University  
**Lawrence Malcolm Ayers**  
**Jack L. Cutshall**  
**Donnie Jean King**  
**Janice L. McLearn**  
**Gaylene S. Nunn**  
**Anita J. Terpstra-Meeves**  
**Vickie K. Williams**  
Tiffin University  
**Jill E. Groves**  
Tri-State University  
**Eric M. Pynn**  
Wagner College  
**Victoria Consentino**  
**Jennifer Cordero**  
**Lynne Gable**  
Walsh College  
**Brian L. Andersen**  
**Rodger Cie Chanski**  
**Ann M. Fraser**  
West Virginia Wesleyan College  
**Max R. Lewis, II**  
Western International University  
**Otis J. White, III**  
Western New England College  
**Laurel D. Dun**  
Western New Mexico University  
**Mary Landreth**  
**Margaret A. Soucy**  
Westminster College  
**Sandra Napier**